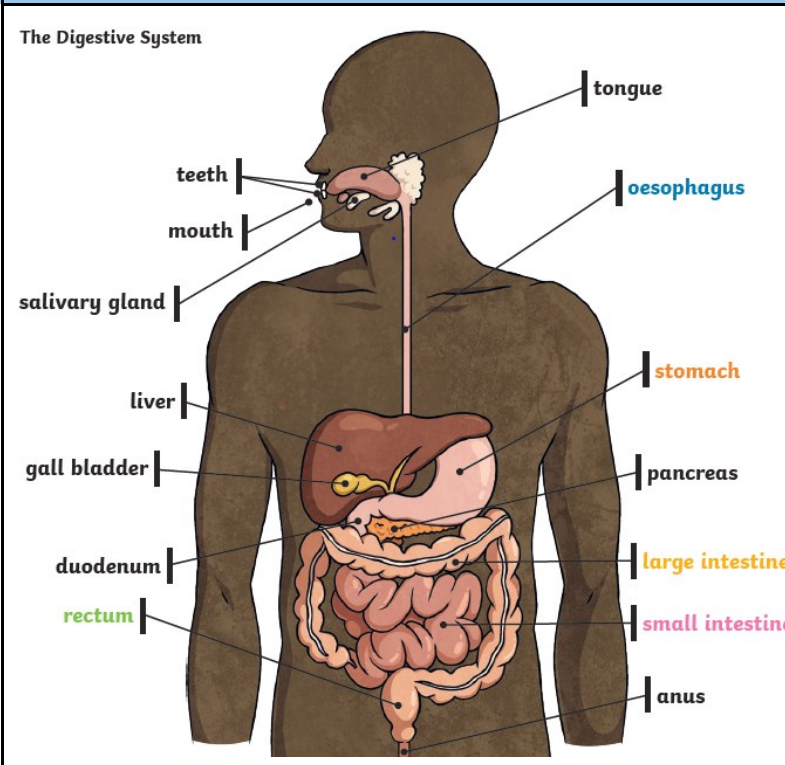


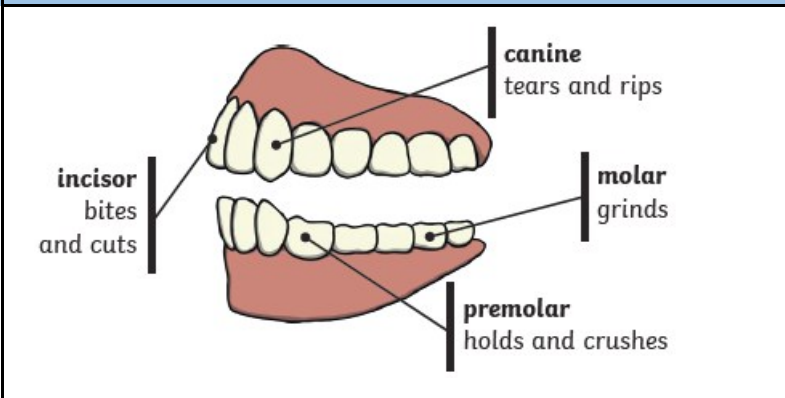
Key Vocabulary

Digest	Break down food so it can be used by the body.
Oesophagus	A muscular tube which moves food from the mouth to the stomach.
Stomach	An organ where food is broken down with stomach acid and by being churned around.
Small intestine	Part of the intestine where nutrients are absorbed into the body.
Large intestine	Part of the intestine where water is absorbed from remaining waste food. Faeces are formed in the large intestine.
Rectum	Part of the digestive system where faeces are stored before leaving the body through the anus.
Herbivore	An animal that eats plants.
Carnivore	An animal that feeds on other animals.
Omnivore	An animal that eats plants and animals.

The Digestive System



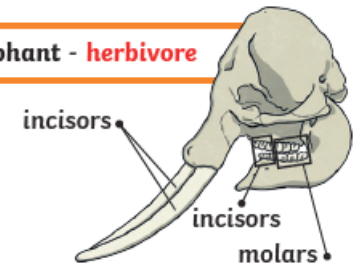
Human Teeth



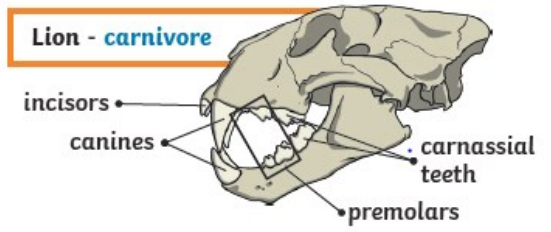
Animal Teeth

Animal teeth are designed to eat different foods depending on the diet of the animal

Elephant - herbivore



Lion - carnivore



Human - omnivore

