

Key Vocabulary

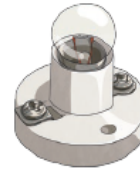
Electricity	The flow of an electric current through a material.
Appliances	A piece of equipment or a device designed to perform a particular job.
Battery	A device that stores electrical energy as a chemical.
Circuit	A pathway that electricity can flow around. It is based around wires and a power supply.
Mains electricity	Electricity supplied through wires.
Electrical conductor	A material that will allow electricity to flow through it.
Electrical insulator	Insulators do not allow electricity to flow through them.

Components

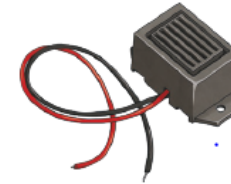
cell: Normally, we would call this a **battery** but scientifically, this is a cell. Two or more cells joined together form a **battery**.



bulb: Lights up in a complete **circuit**.



buzzer: Makes a noise in a complete **circuit**.



wires: Used to connect the different components in the **circuit** together.



motor: Produces movement in a complete **circuit**.



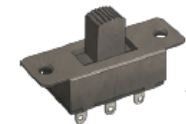
switch: Used to turn other components in the **circuit** on or off.



Switches can be used to open or close a **circuit**. When off, a switch 'breaks' the **circuit** to stop the flow of **electricity**. When on, a switch 'completes' the **circuit** and allows the **electricity** to flow.



push button switch



slide switch

Circuits

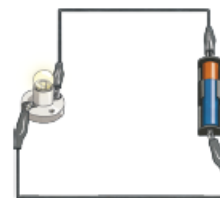
Series Circuit

A **circuit** where the components are connected in a loop.

Electricity flows through each component in a single pathway.



Complete Circuit



Electricity can flow. The components will work.

Incomplete Circuit

There is a break in the **circuit** that prevents the **electricity** from flowing. The components will not work.

