

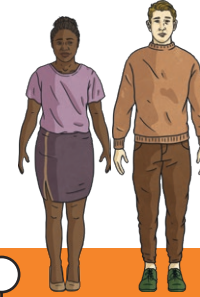
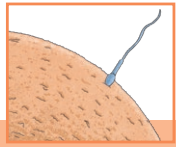
# Disclaimer

This resource is designed to support teaching about biological attributes. You should consider whether this content is appropriate for all children in your class, especially children who have DSD/are intersex, or who are transgender.

## Key Knowledge

**fertilisation**

The male and female sex cells fuse together.

**prenatal**

The cells develop and grow into a foetus inside the female uterus. After about nine months, the baby is born.

**infancy**

Infants undergo rapid growth and development. They learn to walk and talk.

**childhood**

Children learn new skills and become more independent.

**adolescence**

The body starts to change over a few years. The changes occur to enable reproduction during adulthood.

Adolescents become much more independent.

**middle adulthood**

The ability to reproduce decreases. There may be hair loss or hair may turn grey.

**late adulthood**

Leading a healthy lifestyle can help to slow down the decline in fitness and health that occurs during this stage.

**early adulthood**

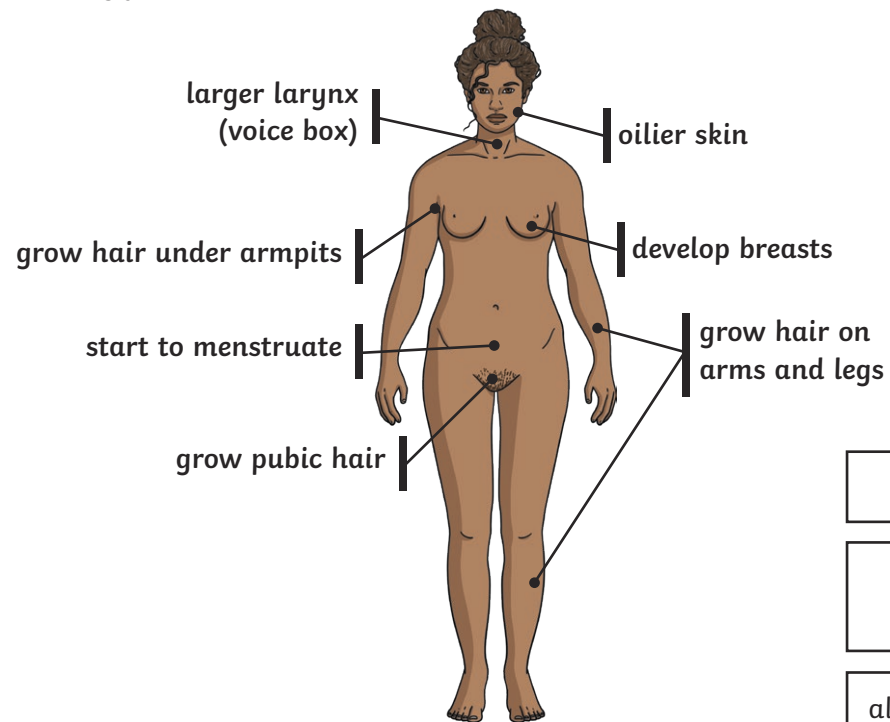
The human body is at its peak of fitness and strength.

## Key Vocabulary

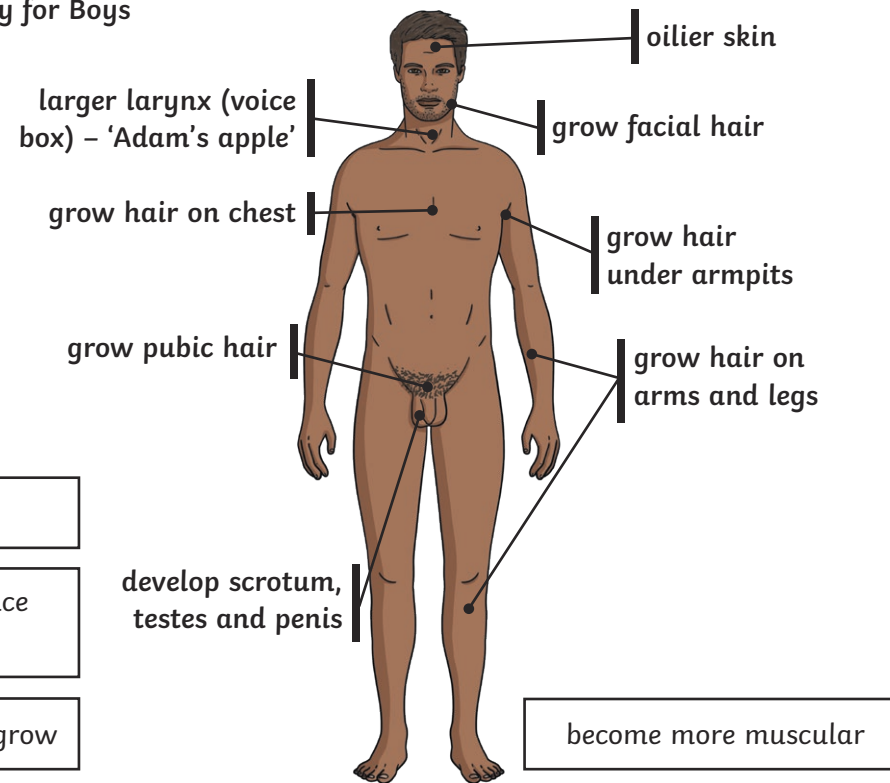
<b>fertilisation</b>	The process of the male and female sex cells fusing together.
<b>prenatal</b>	The period of time before birth.
<b>gestation</b>	The process or time when prenatal development takes place before birth.
<b>reproduce</b>	To produce young.
<b>life cycle</b>	The changes a living thing goes through, including reproduction.

## Key Knowledge

## Puberty for Girls



## Puberty for Boys



grow taller

sweat glands produce more sweat

all parts of the body grow

## Key Vocabulary

<b>adolescence</b>	The stage of development between childhood and <b>adulthood</b> .
<b>puberty</b>	The period of physical change that happens during adolescence.
<b>menstruation</b>	When the female body discharges the lining of the uterus. This happens approximately once a month.
<b>adulthood</b>	The stage of development when a human is fully grown and mature.
<b>life expectancy</b>	The length of time, on average, that a particular animal is expected to live.